

La Valse d'Amélie

Arreglos para Handpan: Jorge Ferrer
mousikehandpanbcn.com

Yann Tiersen

Introducción

Musical score for the introduction of 'La Valse d'Amélie' for four handpans. The score is written for four staves, labeled Handpan 1 through Handpan 4. The key signature is one flat (B-flat) and the time signature is 3/4. Handpan 1 plays a melodic line starting with two grace notes (marked with a '7') followed by a sequence of quarter notes. Handpans 2, 3, and 4 play a simple accompaniment consisting of two measures of rests, followed by a single eighth note in the second measure of each staff.

Frase 1-1

Musical score for the first phrase of 'La Valse d'Amélie' for four handpans. The score is written for four staves, labeled Handpan 1 through Handpan 4. The key signature is one flat (B-flat) and the time signature is 3/4. Handpan 1 plays a melodic line with a triplet of eighth notes in the first measure, followed by a sequence of quarter notes and eighth notes. Handpan 2 plays a rhythmic accompaniment consisting of eighth notes in pairs. Handpans 3 and 4 play a simple accompaniment consisting of two measures of rests, followed by a single eighth note in the second measure of each staff.

Frase 1-2

11

Handpan 1

Handpan 2

Handpan 3

Handpan 4

This musical system covers measures 11 through 18. Handpan 1 plays a melodic line in a B-flat major key signature, starting with a half note G4, followed by a half note A4, and then a quarter note B4. The line continues with a half note G4, a quarter note A4, and a quarter note B4. The final measure of this system contains a half note G4 and a half note A4. Handpan 2 provides a rhythmic accompaniment consisting of eighth-note chords. Handpans 3 and 4 are silent throughout this system.

Frase 2-1

19

Handpan 1

Handpan 2

Handpan 3

Handpan 4

This musical system covers measures 19 through 26. Handpan 1 plays a melodic line in a B-flat major key signature, starting with a half note G4, followed by a half note A4, and then a quarter note B4. The line continues with a half note G4, a quarter note A4, and a quarter note B4. The final measure of this system contains a half note G4 and a half note A4. Handpan 2 provides a rhythmic accompaniment consisting of eighth-note chords. Handpans 3 and 4 are silent throughout this system.

Frase 2-2

27

Handpan 1

Handpan 2

Handpan 3

Handpan 4

Handpan 1: Treble clef, key signature of one flat, 8/8 time signature. Measures 27-34. Melodic line with slurs and accents.

Handpan 2: Treble clef, key signature of one flat, 8/8 time signature. Measures 27-34. Rhythmic accompaniment of chords.

Handpan 3: Treble clef, key signature of one flat, 8/8 time signature. Measures 27-34. Rest.

Handpan 4: Treble clef, key signature of one flat, 8/8 time signature. Measures 27-34. Rest.

Frase 3-1

35

Handpan 1

Handpan 2

Handpan 3

Handpan 4

Handpan 1: Treble clef, key signature of one flat, 8/8 time signature. Measures 35-38. Melodic line.

Handpan 2: Treble clef, key signature of one flat, 8/8 time signature. Measures 35-38. Rhythmic accompaniment of chords.

Handpan 3: Treble clef, key signature of one flat, 8/8 time signature. Measures 35-38. Rhythmic accompaniment of eighth notes.

Handpan 4: Treble clef, key signature of one flat, 8/8 time signature. Measures 35-38. Rhythmic accompaniment of eighth notes.

39

Handpan 1

Handpan 2

Handpan 3

Handpan 4

Handpan 1: Treble clef, key signature of one flat, 8/8 time signature. Measures 39-42: Dotted quarter, eighth, quarter, quarter, quarter, quarter, quarter, quarter.

Handpan 2: Treble clef, key signature of one flat, 8/8 time signature. Measures 39-42: Chords (D4-F4, E4-G4, F4-A4, G4-B4) on a steady eighth-note pulse.

Handpan 3: Treble clef, key signature of one flat, 8/8 time signature. Measures 39-42: Ascending eighth-note lines.

Handpan 4: Treble clef, key signature of one flat, 8/8 time signature. Measures 39-42: Ascending eighth-note lines.

Frase 3-2

43

Handpan 1

Handpan 2

Handpan 3

Handpan 4

Handpan 1: Treble clef, key signature of one flat, 8/8 time signature. Measures 43-46: Dotted quarter, eighth, quarter, quarter, quarter, quarter, quarter, quarter.

Handpan 2: Treble clef, key signature of one flat, 8/8 time signature. Measures 43-46: Chords (D4-F4, E4-G4, F4-A4, G4-B4) on a steady eighth-note pulse.

Handpan 3: Treble clef, key signature of one flat, 8/8 time signature. Measures 43-46: Ascending eighth-note lines.

Handpan 4: Treble clef, key signature of one flat, 8/8 time signature. Measures 43-46: Ascending eighth-note lines.

47

Handpan 1

Handpan 2

Handpan 3

Handpan 4

Frase 4-1

51

Handpan 1

Handpan 2

Handpan 3

Handpan 4

55

Handpan 1



Handpan 2



Handpan 3



Handpan 4



Frase 4-2

59

Handpan 1



Handpan 2



Handpan 3



Handpan 4



63

Handpan 1

Handpan 2

Handpan 3

Handpan 4

This musical system contains four staves for Handpan 1 through Handpan 4. Handpan 1 plays a melodic line consisting of dotted quarter notes and half notes. Handpans 2, 3, and 4 provide a rhythmic accompaniment. Handpan 2 uses a pattern of quarter notes and chords. Handpans 3 and 4 play eighth-note patterns, with Handpan 4 often playing in pairs.

Frase 5-1

67

Handpan 1

Handpan 2

Handpan 3

Handpan 4

This musical system contains four staves for Handpan 1 through Handpan 4. Handpan 1 plays a melodic line with a slur over the first two notes. Handpans 2, 3, and 4 provide a rhythmic accompaniment. Handpan 2 uses a pattern of quarter notes and chords. Handpans 3 and 4 play eighth-note patterns, with Handpan 4 often playing in pairs.

71

Handpan 1

Handpan 2

Handpan 3

Handpan 4

Detailed description: This block contains the musical notation for measures 71 through 74. It features four staves labeled Handpan 1, Handpan 2, Handpan 3, and Handpan 4. All staves are in a key signature of one flat (Bb) and a common time signature (C). Handpan 1 plays a melodic line starting with a half note G4, followed by a slur over two half notes (A4 and Bb4), then a dotted quarter note C5, and ending with two eighth notes (Bb4 and A4). Handpan 2 provides a harmonic accompaniment with a pattern of quarter notes and dyads. Handpans 3 and 4 play a rhythmic accompaniment of eighth notes, with Handpan 4 including a descending eighth-note scale in the final two measures.

Frase 5-2

75

Handpan 1

Handpan 2

Handpan 3

Handpan 4

Detailed description: This block contains the musical notation for measures 75 through 78. It features four staves labeled Handpan 1, Handpan 2, Handpan 3, and Handpan 4. All staves are in a key signature of one flat (Bb) and a common time signature (C). Handpan 1 plays a melodic line starting with a half note G4, followed by a slur over two half notes (A4 and Bb4), then a dotted quarter note C5, and ending with two eighth notes (Bb4 and A4). Handpan 2 provides a harmonic accompaniment with a pattern of quarter notes and dyads. Handpans 3 and 4 play a rhythmic accompaniment of eighth notes, with Handpan 4 including a descending eighth-note scale in the final two measures.

79

Handpan 1

Handpan 2

Handpan 3

Handpan 4

Frase 6-1

83

Handpan 1

Handpan 2

Handpan 3

Handpan 4

87

Handpan 1

Handpan 2

Handpan 3

Handpan 4

Detailed description: This system contains four staves for Handpans 1 through 4. All staves are in treble clef with a key signature of one flat (Bb). Handpan 1 starts with a half note G4, followed by a slur over a quarter-note eighth-note pair (A4-B4), then a quarter-note eighth-note pair (C5-B4), and ends with a dotted half note G4. Handpan 2 plays a steady accompaniment of quarter notes: G4, Bb4, Bb4, G4, Bb4, Bb4, G4, Bb4, Bb4, G4, Bb4, Bb4. Handpan 3 starts with a half note G4, then a quarter note G4, followed by a quarter-note eighth-note pair (A4-B4), then a quarter-note eighth-note pair (C5-B4), and ends with a quarter-note eighth-note pair (D5-C5). Handpan 4 plays a steady accompaniment of quarter notes: G4, A4, B4, C5, B4, A4, G4, A4, B4, C5, B4, A4, G4.

Frase 6-2

91

Handpan 1

Handpan 2

Handpan 3

Handpan 4

Detailed description: This system contains four staves for Handpans 1 through 4. All staves are in treble clef with a key signature of one flat (Bb). Handpan 1 starts with a half note G4, followed by a quarter note G4, then a quarter note F4, and ends with a dotted half note G4. Handpan 2 plays a steady accompaniment of quarter notes: G4, Bb4, Bb4, G4, Bb4, Bb4, G4, Bb4, Bb4, G4, Bb4, Bb4. Handpan 3 starts with a quarter note G4, followed by a quarter-note eighth-note pair (A4-B4), then a quarter-note eighth-note pair (C5-B4), and ends with a quarter-note eighth-note pair (D5-C5). Handpan 4 starts with a half note G4, followed by a quarter note G4, then a quarter note F4, and ends with a dotted half note G4.

95

Handpan 1

Handpan 2

Handpan 3

Handpan 4

Frase 7-1

99

Handpan 1

Handpan 2

Handpan 3

Handpan 4

103

Handpan 1

Handpan 2

Handpan 3

Handpan 4

Frase 7-2

107

Handpan 1

Handpan 2

Handpan 3

Handpan 4

111

Handpan 1

Handpan 2

Handpan 3

Handpan 4

Handpan 1: Treble clef, key signature of one flat, 8/8 time. Measures 111-114: G4 (quarter), A4 (quarter), B4 (quarter), C5 (quarter).

Handpan 2: Treble clef, key signature of one flat, 8/8 time. Measures 111-114: G4 (quarter), A4 (quarter), B4 (quarter), C5 (quarter), G4 (quarter), A4 (quarter), B4 (quarter), C5 (quarter), G4 (quarter), A4 (quarter), B4 (quarter), C5 (quarter).

Handpan 3: Treble clef, key signature of one flat, 8/8 time. Measures 111-114: G4 (quarter), A4 (quarter), B4 (quarter), C5 (quarter), G4 (quarter), A4 (quarter), B4 (quarter), C5 (quarter), G4 (quarter), A4 (quarter), B4 (quarter), C5 (quarter), G4 (quarter), A4 (quarter), B4 (quarter), C5 (quarter).

Handpan 4: Treble clef, key signature of one flat, 8/8 time. Measures 111-114: G4 (quarter), A4 (quarter), B4 (quarter), C5 (quarter).

Frase 8-1

115

Handpan 1

Handpan 2

Handpan 3

Handpan 4

Handpan 1: Treble clef, key signature of one flat, 8/8 time. Measures 115-118: G4 (quarter), A4 (quarter), B4 (quarter), C5 (quarter), G4 (quarter), A4 (quarter), B4 (quarter), C5 (quarter).

Handpan 2: Treble clef, key signature of one flat, 8/8 time. Measures 115-118: G4 (quarter), A4 (quarter), B4 (quarter), C5 (quarter), G4 (quarter), A4 (quarter), B4 (quarter), C5 (quarter), G4 (quarter), A4 (quarter), B4 (quarter), C5 (quarter), G4 (quarter), A4 (quarter), B4 (quarter), C5 (quarter).

Handpan 3: Treble clef, key signature of one flat, 8/8 time. Measures 115-118: G4 (quarter), A4 (quarter), B4 (quarter), C5 (quarter), G4 (quarter), A4 (quarter), B4 (quarter), C5 (quarter), G4 (quarter), A4 (quarter), B4 (quarter), C5 (quarter), G4 (quarter), A4 (quarter), B4 (quarter), C5 (quarter).

Handpan 4: Treble clef, key signature of one flat, 8/8 time. Measures 115-118: G4 (quarter), A4 (quarter), B4 (quarter), C5 (quarter), G4 (quarter), A4 (quarter), B4 (quarter), C5 (quarter), G4 (quarter), A4 (quarter), B4 (quarter), C5 (quarter), G4 (quarter), A4 (quarter), B4 (quarter), C5 (quarter).

119

Handpan 1

Handpan 2

Handpan 3

Handpan 4

This musical score for measures 119-122 features four handpan parts. Handpan 1 plays a simple melodic line of quarter notes. Handpan 2 provides a harmonic accompaniment with chords. Handpans 3 and 4 play a more complex rhythmic and melodic pattern, with Handpan 3 starting a descending eighth-note sequence in measure 121 that Handpan 4 continues.

Frase 8-2

123

Handpan 1

Handpan 2

Handpan 3

Handpan 4

This musical score for measures 123-126 continues the four handpan parts. Handpan 1 plays a melodic line of quarter notes. Handpan 2 provides a harmonic accompaniment with chords. Handpans 3 and 4 play a rhythmic and melodic pattern, with Handpan 3 starting a descending eighth-note sequence in measure 123 that Handpan 4 continues.

127

Handpan 1

Handpan 2

Handpan 3

Handpan 4

131

Handpan 1

Handpan 2

Handpan 3

Handpan 4

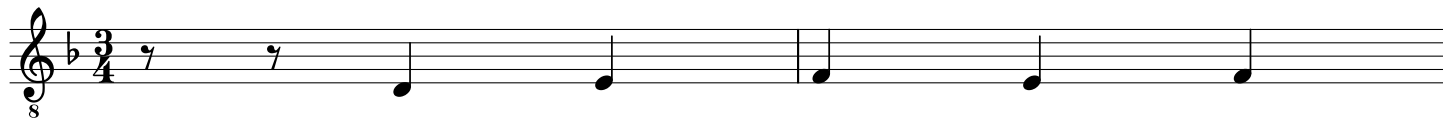
Handpan 1

La Valse d'Àmélie

Arreglos para Handpan: Jorge Ferrer
mousikehandpanbcn.com

Yann Tiersen

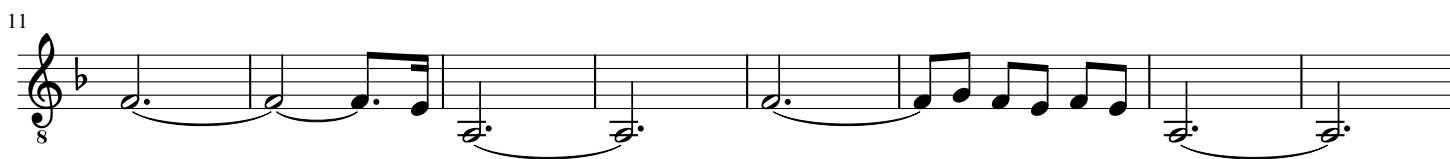
Introducción



Frase 1-1



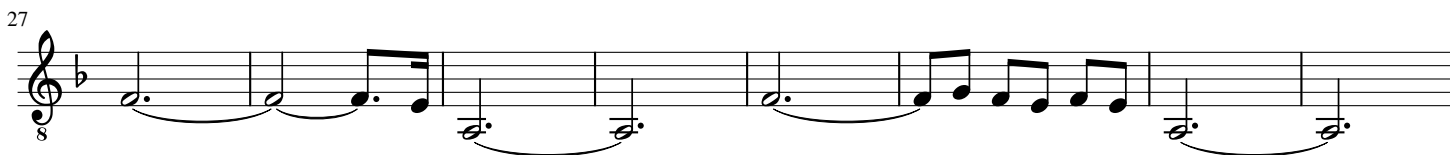
Frase 1-2



Frase 2-1



Frase 2-2



Frase 3-1



39



Frase 3-2

43

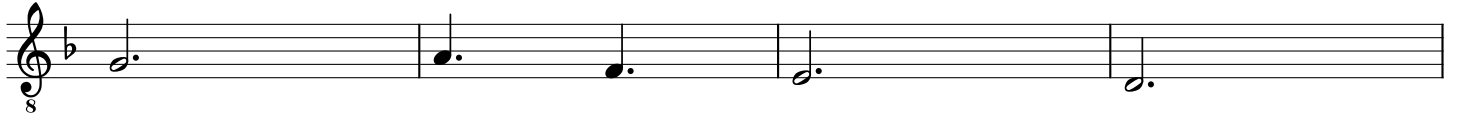


47

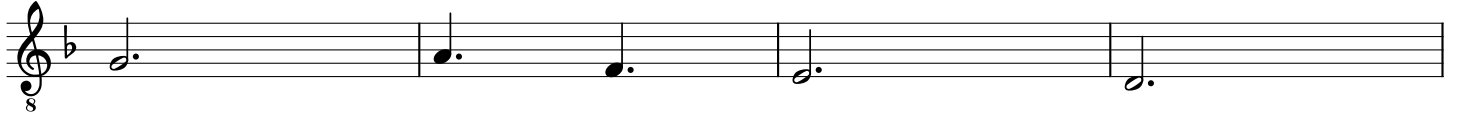


Frase 4-1

51

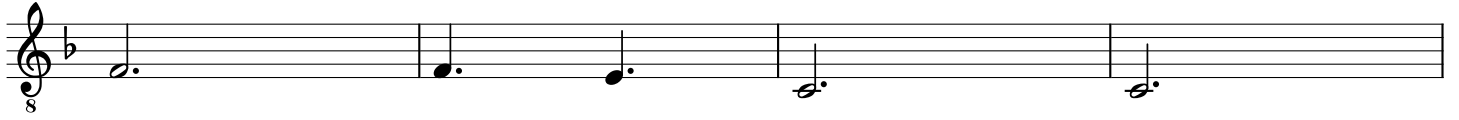


55



Frase 4-2

59



63



Frase 5-1

67



71



Frase 5-2

75



79



Frase 6-1

83



87



Frase 6-2

91

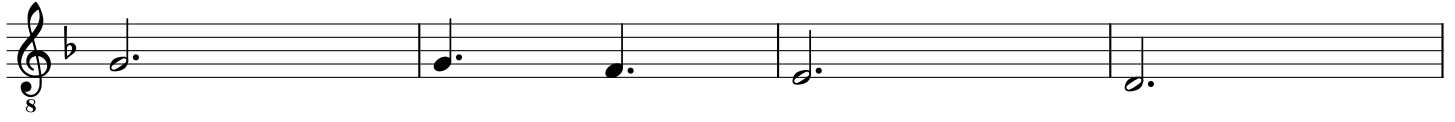


95

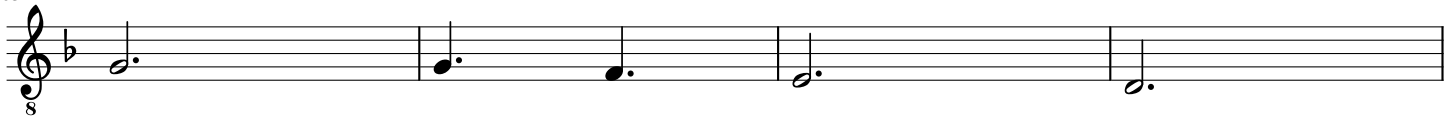


Frase 7-1

99



103



Frase 7-2

107

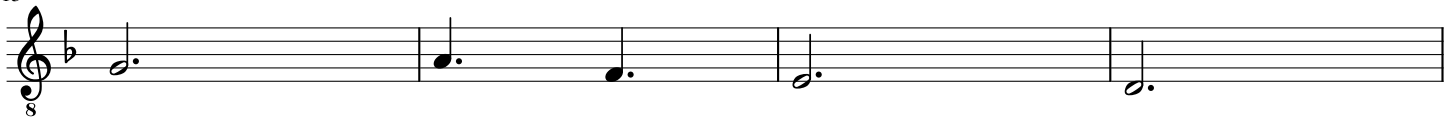


111



Frase 8-1

115



119

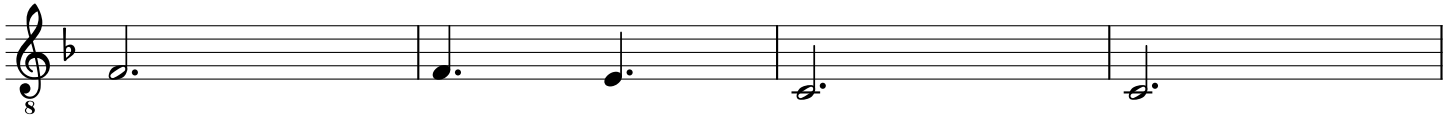


Frase 8-2

123



127



131



Handpan 2

La Valse d'Àmélie

Arreglos para Handpan: Jorge Ferrer
mousikehandpanbcn.com

Yann Tiersen

Introducción

2

Frase 1-1

3

Frase 1-2

11

Frase 2-1

19

Frase 2-2

27

Frase 3-1

35

39



Frase 3-2

43



47

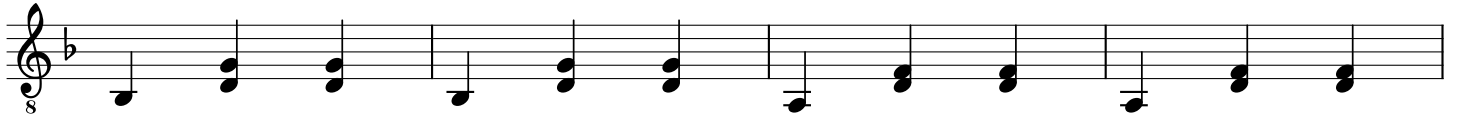


Frase 4-1

51

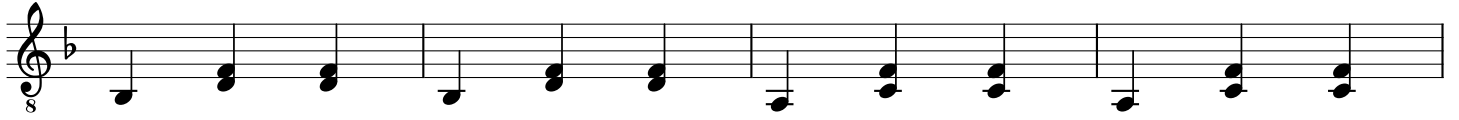


55

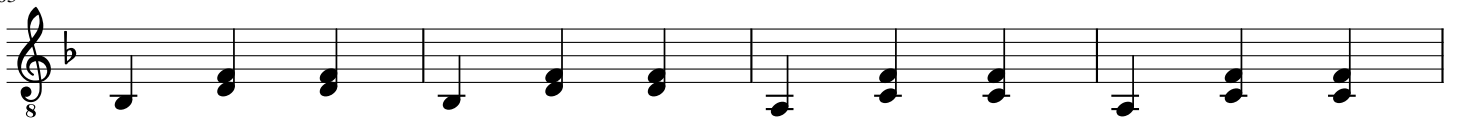


Frase 4-2

59



63

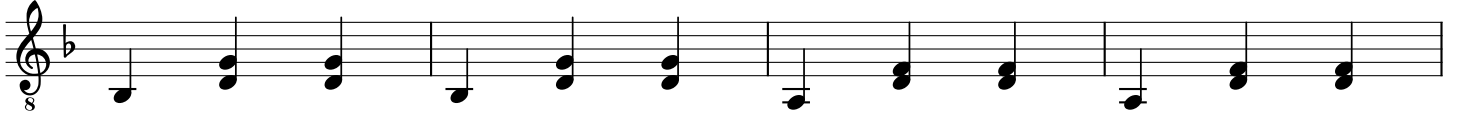


Frase 5-1

67

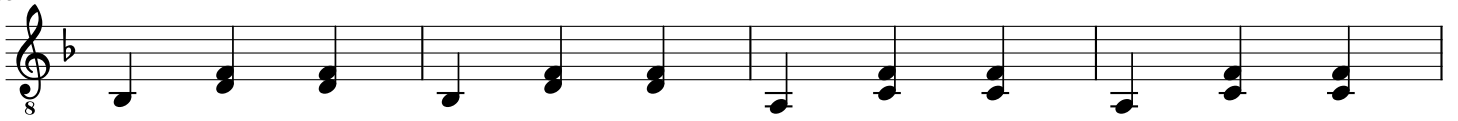


71

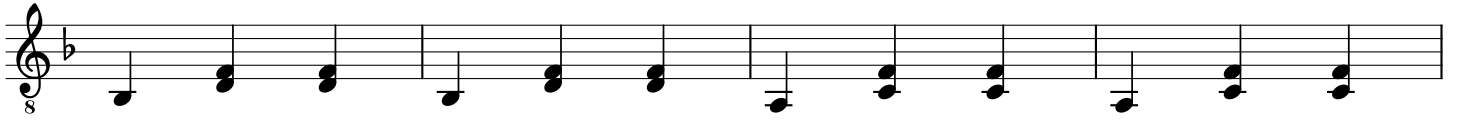


Frase 5-2

75



79



Frase 6-1

83



87

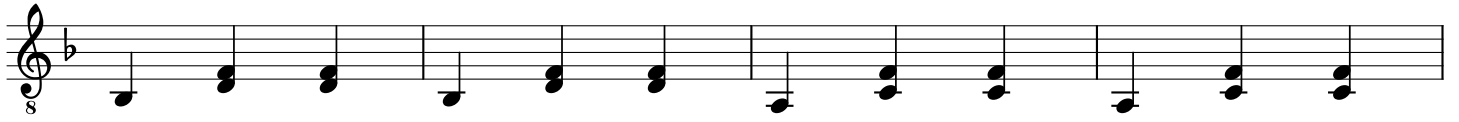


Frase 6-2

91



95



Frase 7-1

99

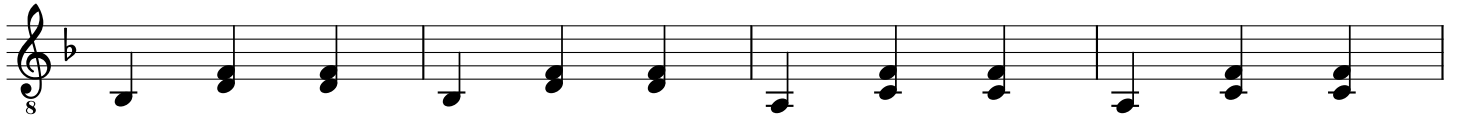


103



Frase 7-2

107



111



Frase 8-1

115



119



Frase 8-2

123



127



131



Handpan 3

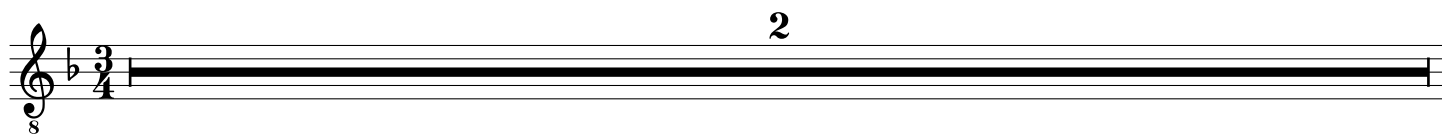
La Valse d'Àmélie

Arreglos para Handpan: Jorge Ferrer
mousikehandpanbcn.com

Yann Tiersen

Introducción

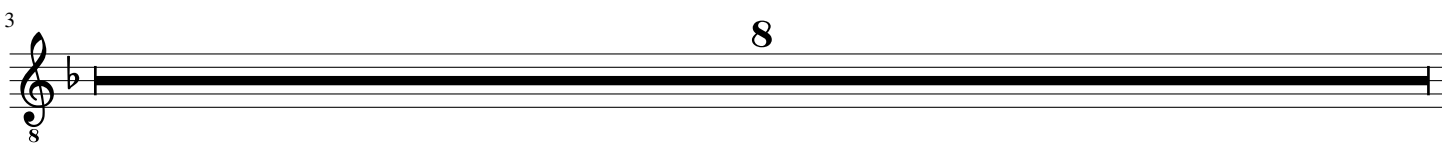
2



Frase 1-1

3

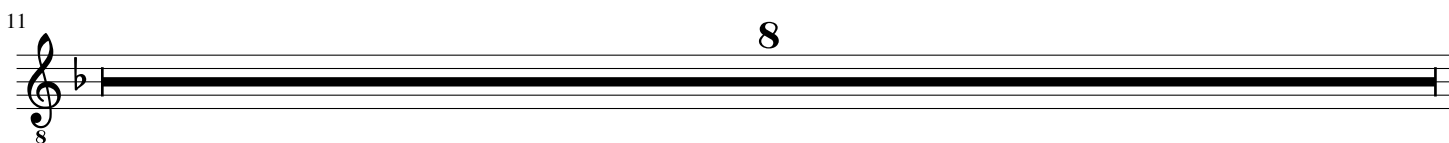
8



Frase 1-2

11

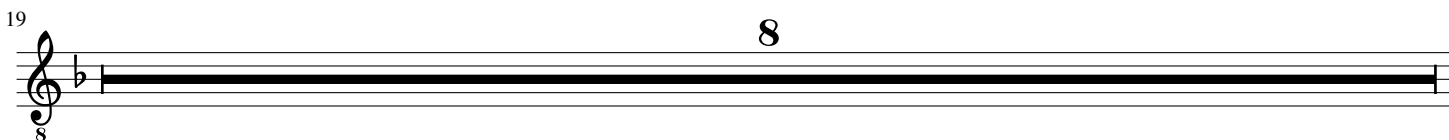
8



Frase 2-1

19

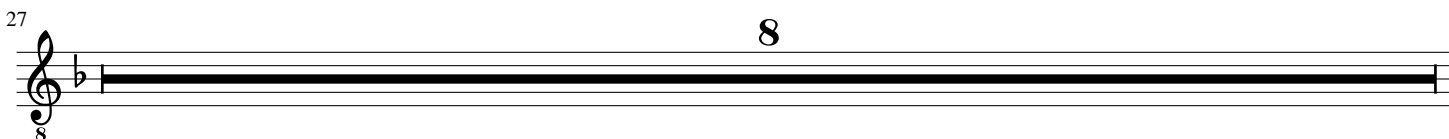
8



Frase 2-2

27

8



Frase 3-1

35



39



Frase 3-2

43



47



Frase 4-1

51



55



Frase 4-2

59



63



Frase 5-1

67

8

Musical notation for Frase 5-1, measures 67-70. The notation is in treble clef with a key signature of one flat (B-flat). It consists of four measures of music. The first two measures contain eighth notes, and the last two measures contain quarter notes. A bass clef with a '3' is shown below the staff in the third measure.

71

8

Musical notation for Frase 5-1, measures 71-74. The notation is in treble clef with a key signature of one flat (B-flat). It consists of four measures of music. The first two measures contain eighth notes, and the last two measures contain quarter notes. A bass clef with a '3' is shown below the staff in the third measure.

Frase 5-2

75

8

Musical notation for Frase 5-2, measures 75-78. The notation is in treble clef with a key signature of one flat (B-flat). It consists of four measures of music, all containing eighth notes.

79

8

Musical notation for Frase 5-2, measures 79-82. The notation is in treble clef with a key signature of one flat (B-flat). It consists of four measures of music, all containing eighth notes.

Frase 6-1

83

8

Musical notation for Frase 6-1, measures 83-86. The notation is in treble clef with a key signature of one flat (B-flat). It consists of four measures of music. The first two measures contain half notes, and the last two measures contain eighth notes. A bass clef with a '3' is shown below the staff in the third measure.

87

8

Musical notation for Frase 6-1, measures 87-90. The notation is in treble clef with a key signature of one flat (B-flat). It consists of four measures of music. The first two measures contain half notes, and the last two measures contain eighth notes. A bass clef with a '3' is shown below the staff in the third measure.

Frase 6-2

91

8

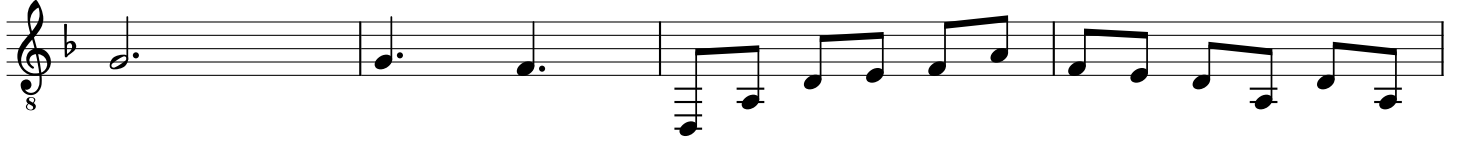
Musical notation for Frase 6-2, measures 91-94. The notation is in treble clef with a key signature of one flat (B-flat). It consists of four measures of music, all containing eighth notes.

95



Frase 7-1

99



103



Frase 7-2

107



111



Frase 8-1

115



119



Frase 8-2

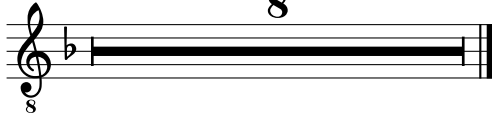
123



127



131



Handpan 4

La Valse d'Àmélie

Arreglos para Handpan: Jorge Ferrer
mousikehandpanbcn.com

Yann Tiersen

Introducción

Musical notation for the introduction, starting at measure 1. The staff is in treble clef with a key signature of one flat (Bb) and a time signature of 3/4. A fermata is placed over the first measure, with the number '2' written above it. The number '8' is written below the staff.

Frase 1-1

Musical notation for phrase 1-1, starting at measure 3. The staff is in treble clef with a key signature of one flat (Bb). A fermata is placed over the first measure, with the number '8' written above it. The number '3' is written above the staff and '8' below it.

Frase 1-2

Musical notation for phrase 1-2, starting at measure 11. The staff is in treble clef with a key signature of one flat (Bb). A fermata is placed over the first measure, with the number '8' written above it. The number '11' is written above the staff and '8' below it.

Frase 2-1

Musical notation for phrase 2-1, starting at measure 19. The staff is in treble clef with a key signature of one flat (Bb). A fermata is placed over the first measure, with the number '8' written above it. The number '19' is written above the staff and '8' below it.

Frase 2-2

Musical notation for phrase 2-2, starting at measure 27. The staff is in treble clef with a key signature of one flat (Bb). A fermata is placed over the first measure, with the number '8' written above it. The number '27' is written above the staff and '8' below it.

Frase 3-1

Musical notation for phrase 3-1, starting at measure 35. The staff is in treble clef with a key signature of one flat (Bb). The notation consists of a series of eighth notes in a rhythmic pattern. The number '35' is written above the staff and '8' below it.

39

8

Frase 3-2

43

8

47

8

Frase 4-1

51

8

55

8

Frase 4-2

59

8

63

8

Frase 5-1

67

8

71

8

Frase 5-2

75

8

79

8

Frase 6-1

83

8

87

8

Frase 6-2

91

8

95



Frase 7-1

99



103



Frase 7-2

107



111



Frase 8-1

115



119



Frase 8-2

123



127



131

